

LIMITED TENDER 1070LM0233 dtd 11.02.2020

**Please note “Response from Registered Vendors alone will be accepted” for participation in this Limited Tender.**

**In case your firm is already Registered & Approved Vendor of Industrial Packaging (or) other units of M/s. Balmer Lawrie & Co. Ltd., elsewhere in India, the details of the same to be provided prior to participating in this tender.**

**Other vendors may contact the undersigned for registering with the unit which is subject to confirmation by our company. Only after confirmation of their registration, they would be considered for participation in the subsequent tenders. “**

Dear Sir,

Sealed offers are invited for supply of **SG Cast Iron Crate Chain – Pitch 63.5mm and suitable Sprocket** for the chain as **per drawing** to our Barrel Plant, Manali, Chennai-68. **Terms & conditions and Bid Form** are enclosed with this tender.

In case of clarification, the bidders may contact **Mr S. Kannappan, Manager (Mfg) / Mr. Rajasekaran, Executive – (Production) Tel – 044-2594 6644** during office hours between **10.00AM and 4.00PM**.

Completed Bid Form in all respect by the bidder sealed and super scribed as **“Tender for supply of SG Cast Iron Crate Chain– Pitch 63.5mm and suitable Sprocket”** shall be forwarded to

**Asst. Manager (Purchase)**

M/s. Balmer Lawrie & Co. Ltd.,

(A Govt. Of India Enterprise)

Industrial Packaging, No.32, Sathangadu Village,

Manali, Chennai 600 068, Tamilnadu.

The bidders shall send their bids either by **courier / post** (or) **dropped in the Tender Box kept at the above address.**

The **last date for submission of bid** for the above tender is **on or before 21.02.2020 at 3.00 P.M**

Details of the tender are also available in our company's website **www.balmerlawrie.com.**

Thanking you

Yours faithfully  
for Balmer Lawrie & Co. Ltd.

(RAMESH. S)

Asst. Manager (Purchase)

☎-044-2594 6651 ✉ - sambath.r@balmerlawrie.com

**Balmer Lawrie & Co. Ltd. GSTN-3AABCB0984E1Z2**

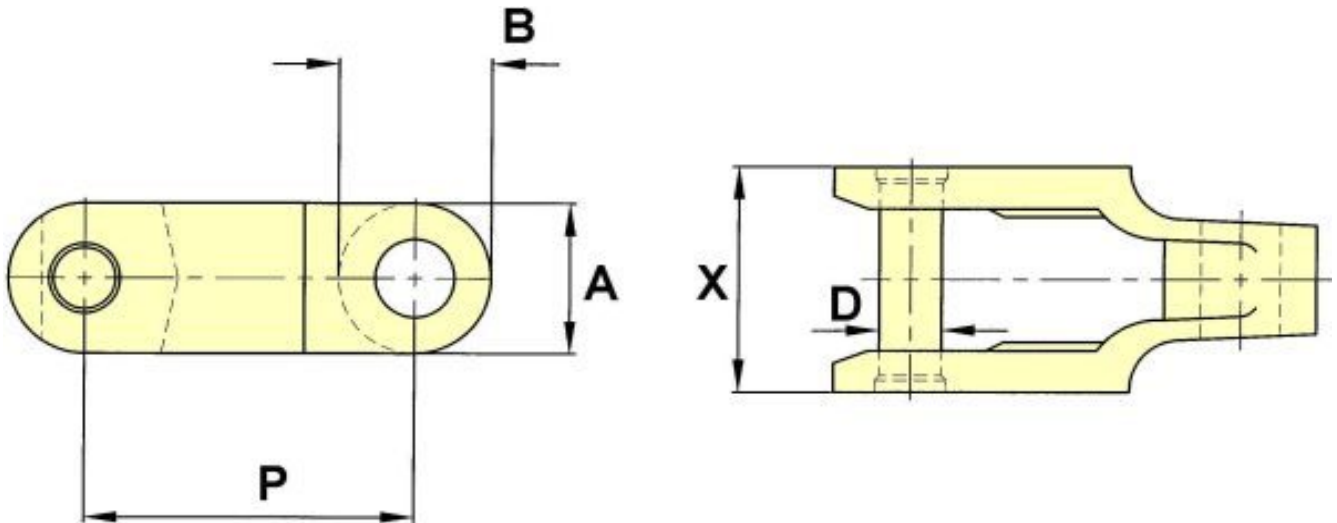


**Balmer Lawrie & Co. Ltd.**  
SBU – Industrial Packaging, Chennai

## Crate conveyor chains



### Schematic Drawing of Crate Conveyor Chain



P - PITCH	ALLOW. LOAD	U.T.S.	D- PIN DIA.	A – SIDEBAR DEPTH	B	X	MIN.TURN RAD.
2.500	1,500	12,500	0.44	1.13	1.13	1.69	21

1. **Note:** All dimensions are in Inches.

2. **Material of Construction [MOC]:**

- Chain Link : SG Iron [ Spheroidal Graphite Cast Iron ]
- Pin : Carbon Steel EN8 (or) EN9

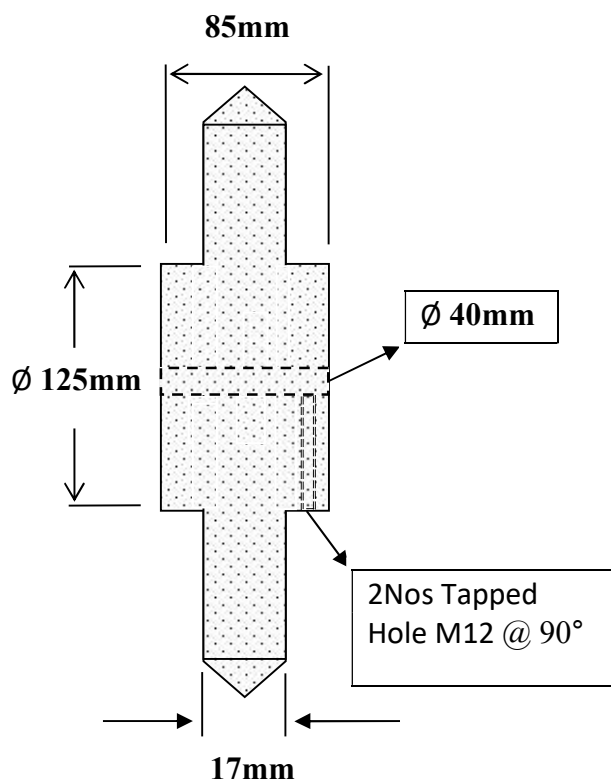
## Drawing & Specification of **SPROCKET**



**Balmer Lawrie & Co. Ltd.**

SBU – Industrial Packaging, Chennai

### **SPROCKET**



- Sprocket – 14 Teeth / (2-1/2") 63.5mm Pitch, with Pilot Bore, material – EN-8/EN-9
- The above sprocket should match with the crate chain supplied by the successful tenderer.

### **TERMS AND CONDITION**

1. The term “**Company (or) BL**” wherever mentioned in the tender document refers to “**BALMER LAWRIE & CO. LTD.**”
2. The term “**bidder**” means the firm or company with whom the order is placed and shall be deemed to include the bidder, successors, representatives, heirs, executors and administrators duly approved by the company.
3. Period of Supply: **Within 60 days from the date of receipt of our Purchase order.**
4. Quantity mentioned indicative and is subject to change depending upon market conditions.
5. The offer shall be submitted in our enquiry format only and any conditional offers will not be accepted.
6. The offer must be kept valid for a minimum period of **60 Days from** the date of opening the offer.
7. The price quoted by the bidder shall remain valid till the supply is completed. During the tenure of the supply period, no price increase will be considered, except for change in statutory levies imposed by Union / State Govt. / Local authorities.
8. Payment: **30 days from the date of receipt of material at our Stores.**
9. **Penalty Clause**: Any failure on the part of the vendor to supply the material as per the delivery schedule, required quantity, approved quality etc. will be viewed seriously. Further, the company reserves the right to procure the material from the local market at the then prevailing price and the additional cost if any incurred in this process will be recovered from the vendor. Also the vendor may be debarred from participating in future tenders of the company.
10. The bids of any bidder may be rejected if a conflict of interest between the bidder and the Company is detected at any stage.
11. Late tenders / delayed tenders including postal delay and those not conforming to the prescribed terms and conditions will not be considered at all.
12. The company would not carry out any negotiations except with such bidders who is / are the lowest quoted bidders originally. As such it would be in the interest of the bidders to quote the lowest possible rate.
13. It shall be understood that every endeavor has been made to avoid error which may materially affect the basis of the tender and the successful bidder will take upon himself to provide for risk of any error which may subsequently be discovered and shall make no subsequent claim on account thereof.
14. **ARBITRATION**: Any dispute or difference arising under this Contract shall be referred under jurisdiction of Chennai to a sole arbitrator to be appointed by the Chairman & Managing Director, Balmer Lawrie & Co. Limited and the provisions of Arbitration and Conciliation Act, 1996 including any statutory modifications or enactment thereof shall apply to the Arbitration proceedings. The fees of the arbitrator, if any, shall be shared equally by both the parties. The award shall be a speaking award stating reason therefor and is final and binding on the parties. The proceeding shall be conducted in English language and courts at Chennai will have exclusive jurisdiction to settle any dispute arising out of this contract.

## BID - FORM

**1070LM0233 dtd 11.02.2020 due on 21.02.2020**

Description of Material	Estimated Quantity	Unit Price Rs. per Metre/No	Total Amount Rs.
	A	B	A x B
<b>1. Manufacturing and supply SG Cast Iron CRATE CHAIN as per drawing</b> <b>Pitch - 2.5 Inches [63.5mm]</b> <b>Material of Construction [MOC]:</b> <ul style="list-style-type: none"> <li>Chain Link : SG Cast Iron [ Spheroidal Graphite Cast Iron ]</li> <li>Pin : Carbon Steel EN8 (or) EN9</li> </ul> <b>Schematic Drawing of Crate Conveyor Chain enclosed</b>	120 Meter		
<b>2. Manufacturing and supply of Suitable Sprockets for above chain as per drawing</b>  <b>Sprocket – 14 Teeth / (2-1/2") 63.5mm Pitch, with Pilot Bore, Material – EN-8/EN-9</b>	8 Nos		
GST %			
*Total Nett Delivered Amount Rs.			
<p>1. The “ <b>Total Nett Delivered Amount</b> ” shall be inclusive <b>of freight on F.O.R. at our plant</b> on “<b>DOOR DELIVERY</b>” basis inclusive of transit insurance.</p> <p>2. <b>The material supplied by the successful tenderers should be provided with 6 month guarantee from the date of supplies against any material/manufacturing defect.</b></p> <p>3. <b>INSPECTION:</b> If necessary, the material may be inspected by company at the premises of the successful bidder before delivery. Sample drawn out from the finished job may be tested by company with external testing agency to confirm the material specification.</p> <p>4. <b>AWARD OF CONTRACT:</b></p> <p style="margin-left: 20px;">a. The lowest [L1] bid would be arrived on the basis of “<b>Total Nett Delivered Amount</b> “ as above</p> <p style="margin-left: 20px;">b. <b>100% order will be placed on the L1 quoted bidder.</b></p>			
TIN No.		e-Mail ID	
PAN ( Personal Account No.)		Mobile/Telephone / Fax Nos.	
NSIC / SSI / MSME Reg.No.		Contact Person	
<p><b>We have quoted our price after studying carefully all the Tender Details, Terms and Conditions and we confirm to have accepted the same.</b></p> <p style="text-align: right;"><b>Signature of the bidder with Seal &amp; Date</b></p>			