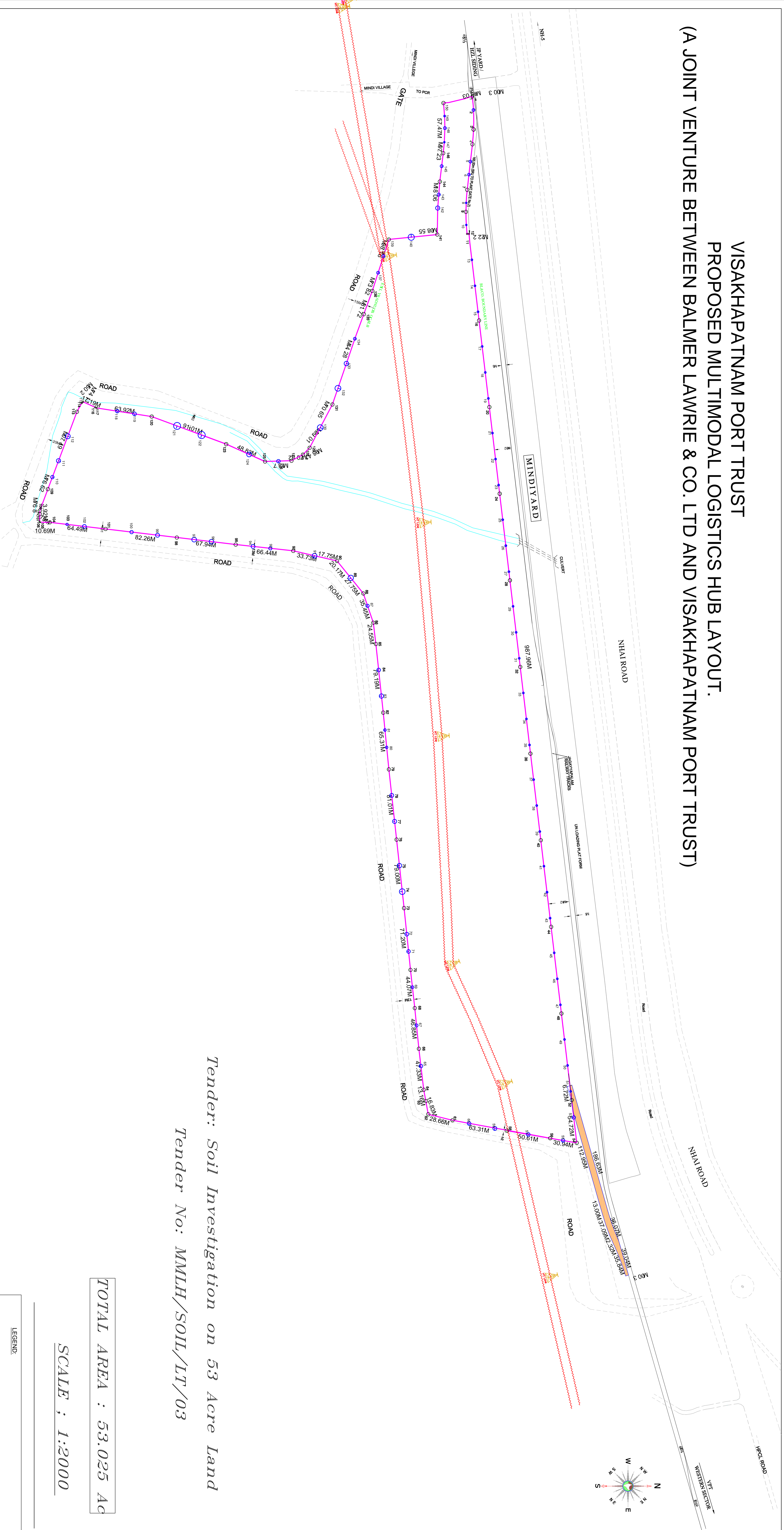


**VISAKHAPATNAM PORT TRUST
 PROPOSED MULTIMODAL LOGISTICS HUB LAYOUT.
 (A JOINT VENTURE BETWEEN BALMER LAWRIE & CO. LTD AND VISAKHAPATNAM PORT TRUST)**



*Tender: Soil Investigation on 53 Acre Land
 Tender No: MMH/SOIL/LT/03*

TOTAL AREA : 53.025 Ac

SCALE ; 1:2000

LEGEND:

- EXISTING RAILWAY SLIDING
- PRO. BL. & CO BOUNDARY
- ROADS
- DRAIN
- HIGHTENSION LINE